



Revised Date: 09 June 2016

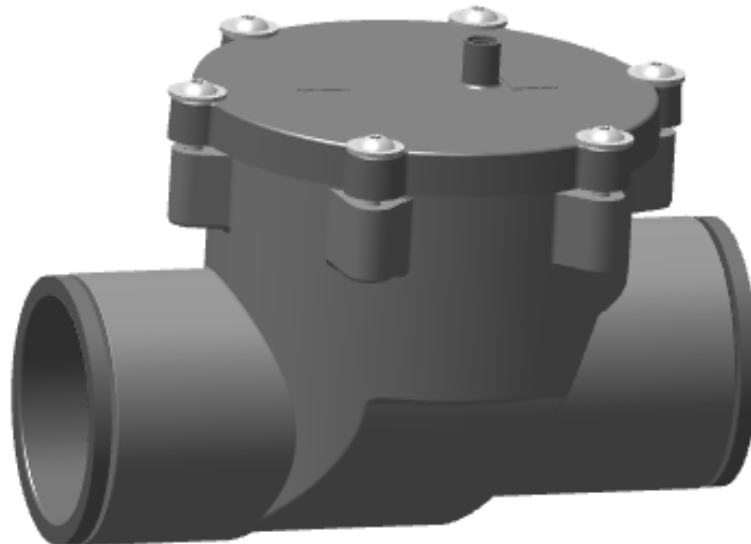
SUBMITTAL

Project :

Date :

Qty :

2 IN. CHECK VALVE 2999474 CHECK VALVE KIT



The Evac check valve prevents the backflow of waste water after a discharge cycle. The check valve is a 2 inch in diameter, full port, vacuum-rated, flapper style valve.

Functions

- Prevents backflow of waste water to vacuum piping
- Provides a clean vacuum source to activator in gang lift configuration

Operation

The check valve is normally installed in the overhead piping of a two-stage lift to eliminate the possibility of fallback waste water.

The flapper inside the valve seals off the vacuum piping during normal or idle condition. When vacuum is applied by the activator, the waste water pooled in a reform pocket rushes through and momentarily opens the flapper.

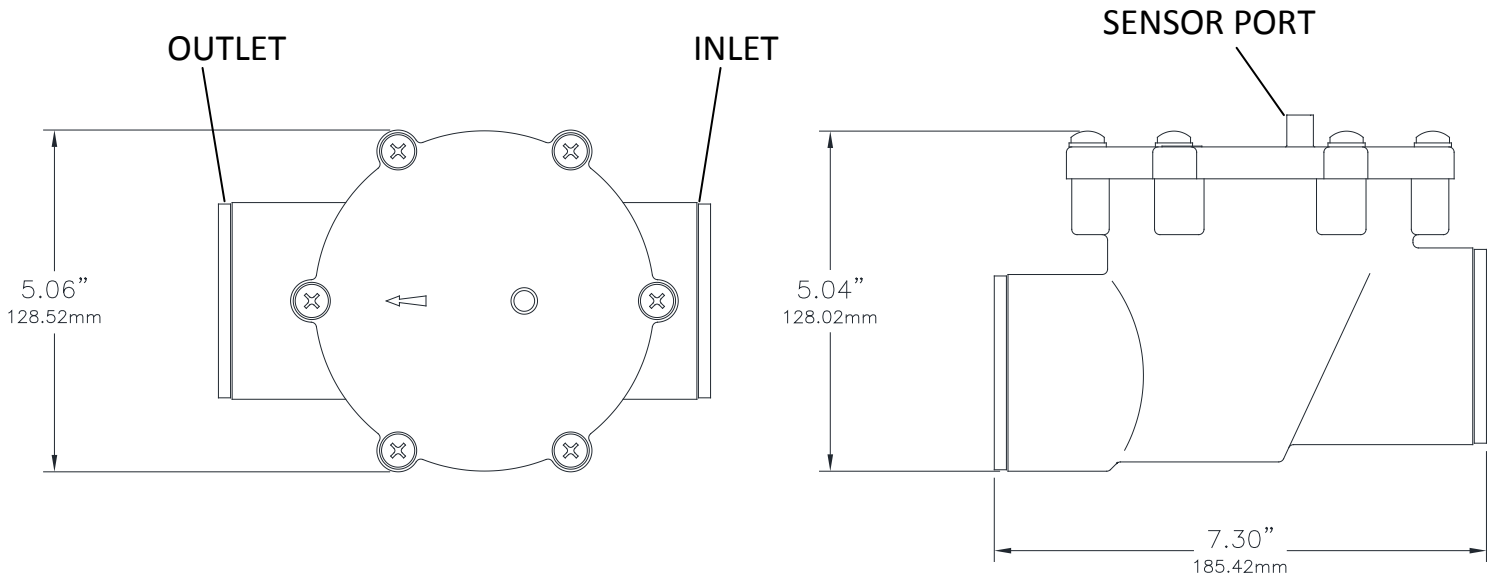


Revised Date: 09 June 2016
SUBMITTAL
Project :
Date :
Qty :

2 IN. CHECK VALVE

2999474 CHECK VALVE KIT

Data Sheet



- **Material:** PVC Type 1, Grade 1
- **Net Weight:** 1.45 lbs / 0.66 kg
- **Inlet / Outlet Connections:** 2" PVC Sockets
- **Sensor Port Connections:** 3/8 in. EPDM Hose